

# GLASS & PLASTIC PAINTS / SPECIALIST SCENIC FINISHES

## Hato®Cel Dance Floor Paint

Quick drying, highly elastic and achieves excellent adhesion to plastic sheeting, soft and hard foams, PVC flooring, artificial and real leather [but better to try Hato®Leather page 35], and textiles. In fact, most difficult to paint surfaces can be painted flawlessly without any "owls eyes" or craters. PVC dance floor and projection screen surfaces can be painted with ease. Available in 18 opaque matt and 9 transparent glossy colours plus a colourless gloss glaze. The glaze can be used to make dance floor material high gloss. They are soluble in water and are almost odourless. Not for use on "oily" plastics. Please note: Matt Light Blue & Matt Light Violet are not included in starter kit.

Hatocel Plastic Sheet Paints can be applied by brush, roller or spray gun. Colours can be diluted with water and are inter mixable. Metallic pigments can be mixed into the gloss colours. Surfaces must be clean, dry and free from contamination. Coverage: Hatocel Matt covers 5-7.5 m<sup>2</sup> per litre, Gloss covers 6.5-10 m<sup>2</sup> per litre. [Colours marked with an \* are included in their respective starter kits]



code	Finish	Colour	volume	price	5+
PAT115001	Matt	Lemon	1L	£56.00	£50.40
PAT115002	Matt	Yellow	1L	£56.00	£50.40
PAT115003	Matt	Ochre	1L	£56.00	£50.40
PAT115004	Matt	Orange	1L	£56.00	£50.40
PAT115005	Matt	Carmine Red	1L	£56.00	£50.40
PAT115006	Matt	Wine Red	1L	£56.00	£50.40
PAT115007	Matt	Telemagenta	1L	£56.00	£50.40
PAT115008	Matt	Light Violet	1L	£56.00	£50.40
PAT115009	Matt	Violet	1L	£56.00	£50.40
PAT115010	Matt	Light Blue	1L	£56.00	£50.40
PAT115011	Matt	Steel Blue	1L	£56.00	£50.40
PAT115012	Matt	Ultramarine Blue	1L	£56.00	£50.40
PAT115013	Matt	Light Green	1L	£56.00	£50.40
PAT115014	Matt	Sap Green	1L	£56.00	£50.40
PAT115015	Matt	Leaf Green	1L	£56.00	£50.40
PAT115016	Matt	Brown	1L	£56.00	£50.40
PAT115020	Matt	Black	1L	£56.00	£50.40
PAT115021	Matt	White	1L	£56.00	£50.40
PAT116000	Gloss	Colourless	1L	£56.00	£50.40
PAT116001	Gloss	Yellow	1L	£56.00	£50.40
PAT116002	Gloss	Ochre	1L	£56.00	£50.40
PAT116003	Gloss	Orange	1L	£56.00	£50.40
PAT116004	Gloss	Red	1L	£56.00	£50.40
PAT116005	Gloss	Violet	1L	£56.00	£50.40
PAT116006	Gloss	Blue	1L	£56.00	£50.40
PAT116007	Gloss	Green	1L	£56.00	£50.40
PAT116008	Gloss	Brown	1L	£56.00	£50.40
PAT116009	Gloss	Black	1L	£56.00	£50.40
PAT1350	Matt	16 x 50ml Pots		£109.98	
PAT1360	Gloss	16 x 50ml Pots		£58.25	

## SPECIALIST SCENIC FINISHES

### Hato®Rust

Our favourite effect! The benefit of this system over the classic iron-fillings-and-vinegar method is that the activator should not interfere with other paints. To use, apply the primer to the surface of the object and allow to dry for 14 hours before applying the activator.

We offer a choice of 2 activators: the liquid form which gives the user more control, as the effect can be built up gradually, but has a low viscosity and will drip off objects. This can help add to an effect on a piece of scenery though it's worth noting that it can take a few hours to develop the rust effect. We also offer the gel form which is ideal for creating a strong rust effect in minutes. We recommend it for working on 3-D objects/vertical surfaces as it will not drip off. We recommend sealing with the Rust Effect Varnish as without it, the rust can rub onto clothes and skin, causing marks. The Rust Effect Varnish hardly alters the appearance of the rust whereas conventional glazes can tend to spoil the effect.

Primer Coverage: 4 m<sup>2</sup>/kg.

Liquid Activator Coverage: 8-10 m<sup>2</sup>/L.

Gel Activator Coverage: 8-10 m<sup>2</sup>/L.

Varnish Coverage: 8-10 m<sup>2</sup>/L.



Avoid discolouring other paints on the piece

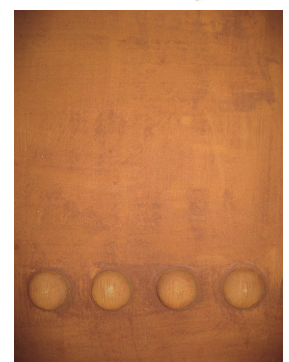


Objects rusted with the HATO®Rust system; above a piece of fibre rope, below a galvanised Key Clamp.



### Iron Powder

This fine iron powder will rust quickly with water and is excellent for realistic rust effects. For best results apply a coat of a matt glaze such as Polyvine Dead Flat [page 60] onto your base colour. While the glaze is still wet sprinkle liberal quantities of iron powder into the glaze and spray with vinegar using a hand-held mister [page 106]. The iron powder will immediately begin to rust. Realistic-looking riveted steelwork can be achieved by glueing our Wooden Rivets [page 110] to MDF and applying some flat glaze around the edges and letting it run. Sprinkle with iron powder, spray with vinegar and it will look like rust is weeping from the rivets. Excess powder can be swept off when the glaze is dry.



See also Dirty Down Rust Effect Spray (page 77)

code	Type	weight	price
PAT233658	HATO®Rust Primer	2.5kg	£53.13
PAT233660	Varnish	1L	£14.21
PAT233662	Liquid Activator	1L	£11.32
PAT233662G	Gel Activator	1L	£14.55

code	weight	price	10 kg+
DPP258	1kg	£15.85	£14.28

# SPECIALIST SCENIC FINISHES

## Dirty Down Paint-On Effects

From Dirty Down, better known for their popular sprays (see page 77), this range of highly effective paint-on products provides the propmaker and scenic artist with a ready made effect which can either be left as it is or worked into and adapted to suit the designer's exact requirement. See also Fuller's Earth on page 30.

**Notes:** Solvent-based. Works best at room temperature. Only apply to non-porous surfaces but porous surfaces can be sealed with a matt varnish. We would suggest Plasti-kote clear sealer [page 77]. The effect looks best on rough surfaces. They do not adhere well to smooth polished surfaces. Do a test sample first. UN 1993 classified.

### Rust Effect by Dirty Down

The rust effect forms as the product dries. Light coats dry lighter, heavier coats dry darker. New yellow rust effect is a great addition to the range best used in junction with the standard rust. The colour will be varied and interesting rather than even. See notes below. See also Dirty Down Rust Spray [page 77], and Haussmann's Rust Effect.

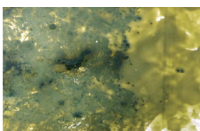


### Green Verdigris Effect by Dirty Down

This corroded copper effect can be applied lightly or in many coats or splatters to provide a highly effective and attractive finish.

### Moss Effect by Dirty Down

This light shade can be varied and darkened by the application of more coats. The product intentionally produces an effect with colour variations. See also Dirty Down Mould Spray [page 77].



Colour	code	25ml	250ml
Moss	PATDDMS	£4.90	PATDDM £28.40
Rust	PATDDRS	£4.90	PATDDR £28.40
Verdigris	PATDDVS	£4.90	PATDDV £28.40
Yellow Rust	PATDDYS	£4.90	PATDDYR £28.40

## Mica Flakes

Mica is an inert complex silicate which forms naturally in thin transparent layers. It makes an interesting sparkling decorative finish which can be easily fixed by sprinkling onto wet PVA adhesive or glaze.



code	Colour	weight	price
DPP056	Bronze	500g	£17.50
DPP057	Clear	500g	£17.50
DPP058	Silver	500g	£19.18
DPP059	Black/Silver	500g	£19.18
DPP060	Gold	500g	£17.50

## Van Dyke Crystals

Used to provide a warm brown aged look to wood. Van Dyke can be mixed with warm water, glaze or size. The amount of dilution depends on the depth of colour required. Apply liberally with a wide brush.

See also FEVs French Enamel Varnish [page 35] and Scumbles [page 63].

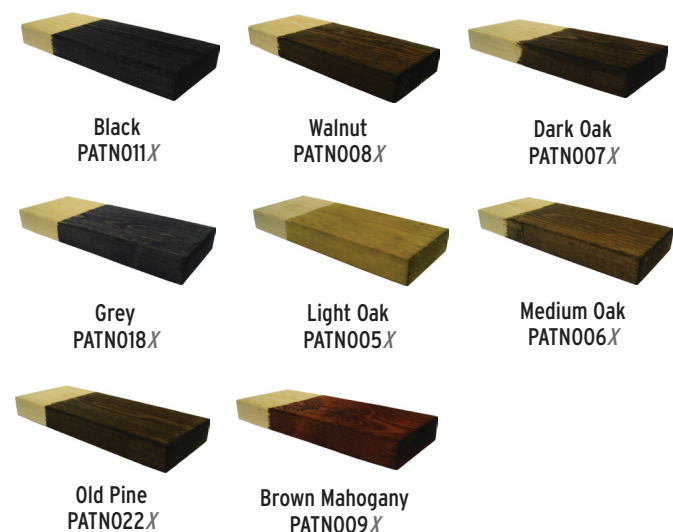


code	price
DPP061	£16.33



## Water-Based Wood Stain

Very popular water-based stains for hard and soft woods, formulated to reduce the grain-raising effect normally associated with water stains. Covers 8 - 10 m<sup>2</sup> per litre.



Colour	code	1L	5L
Light Oak	PATN0051	£12.56	PATN0055 £36.79
Medium Oak	PATN0061	£12.56	PATN0065 £36.79
Dark Oak	PATN0071	£12.56	PATN0075 £36.79
Walnut	PATN0081	£12.56	PATN0085 £36.79
Brown Mahogany	PATN0091	£12.56	PATN0095 £36.79
Black	PATN0111	£12.56	PATN0115 £36.79
Grey	PATN0181	£12.56	PATN0185 £36.79
Old Pine	PATN0221	£12.56	PATN0225 £36.79

## Rustin's Wood Dye

An economical penetrating stain which will not raise the grain. Spirit-based. We can supply other sizes and makes of stain to order.

For driftwood effects take a look at Flints Silver Grey Driftwood dye [page 34]. See also Colourants [page 65] and Glazes [page 58].



Colour	code	250ml	code	1L
Light Oak	PAT3571	£6.35	PAT35711	£18.67
Medium Oak	PAT3572	£6.35	PAT35721	£18.67
Dark Oak	PAT35731	£18.67		
Pine	PAT3574	£6.35	PAT35741	£18.67
Walnut	PAT3575	£6.35	PAT35751	£18.67
Antique Pine	PAT3576	£6.35	PAT35761	£18.67
Red Mahogany	PAT3577	£6.35	PAT35771	£18.67

# SPECIALIST SCENIC FINISHES / METALLIC PAINTS & POWDERS

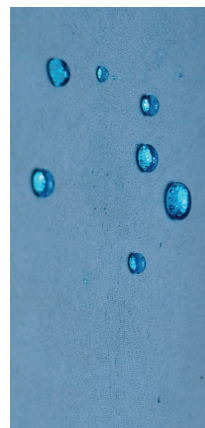
## Hato®Tex Phosphorescent Paint

This excellent glow-in-the-dark paint from Haussmann is perfect for both specialist effects on stage, and also for marking up back stage. Although the binder of the paint has been specially formulated to improve adhesion and flexibility when applied to fabric surfaces (in our testing we were really impressed with the flexibility), it is equally well applied to solid substrates such as wood, thermoplastics etc. We found that although it was a neutral coating, when applied onto Flints Black it was a little creamy (not noticeable on white surfaces). Once charged with UV / Tungsten light the pale green glow is incredibly effective. Well priced for a glow-in-the-dark paint, we stock the 50 ml tester pots for those smaller jobs.



## HATO®Nano Textile Protector

HATO®Nano Textile Protector has been specially developed to seal fabrics and paintings with a selfcleaning, lotus effect. Various stage materials, paintings, furniture, as well as natural and synthetic clothing and costumes can be protected with HATO®Nano Textile Protector. It has been tested with oil and water-based substances such as mustard, ketchup, and wine. We tested it with Pigs Might Fly Blood [page 120] and it rolled right off. Garments treated with HATO®Nano can survive several washes [up to 30° C, max. 4 cycles before reapplication]. Apply by brush, low pressure, or airless sprayer. For small surfaces HATO® Nano Textile Protector can be applied with a hand-held spray gun. We recommend testing the product on a small section of the fabric before use.



SPECIFICATION: Consumption: approx. 120 - 150ml / m<sup>2</sup>.

code	volume	price
PAT342751	1L	£89.95
PAT342755	50ml	£11.75

code	volume	price
PAT15601	1L	£32.15
PAT15605	5L	£97.75

## METALLIC PAINTS & POWDERS

### Bristol StandTex Metallic Palette

The Silver is a bestseller with Flints for good reason. Like all the Bristol metallics it is water-based with exceptional coverage and is ready to use. A unique feature of Bristol Paints which proves popular is that they can be mixed with the Bristol Primary Palette [see page 22] to create metallic colours which are very durable. Simply mix the paints together to the desired effect then add 25% of AquaPlus [page 28] to prevent the colour and metallic from separating. This range of metallics is also available in a durable high adhesion water-based polyurethane. Please phone for details.



Approx. Volume/Weight	100ml	800ml/1 kg	2.4L/3 kg	4L/5 kg	8L/10 kg
Price	£6.93	£25.14	£63.34	£89.77	£171.31
Silver	BRI91060	BRI11060	BRI31060	BRI51060	BRI21060
Approx. Volume/Weight	100ml	800ml/1 kg	2.4L/3 kg	4.8L/6 kg	8L/10 kg
Price	£6.93	£33.60	£89.97	£151.99	£244.82
Lemon Gold	BRI91061A	BRI11061A	BRI31061A	BRI61061A	BRI21061A
Light Lemon Gold	BRI91061B	BRI11061B	BRI31061B	BRI61061B	BRI21061B
Mid Gold	BRI91061C	BRI11061C	BRI31061C	BRI61061C	BRI21061C
Deep Gold	BRI91061D	BRI11061D	BRI31061D	BRI61061D	BRI21061D
Antique Gold	BRI91061E	BRI11061E	BRI31061E	BRI61061E	BRI21061E
Bronze	BRI91061H	BRI11061H	BRI31061H	BRI61061H	BRI21061H
Copper	BRI91061G	BRI11061G	BRI31061G	BRI61061G	BRI21061G
Gun Metal	BRI91061N	BRI11061N	BRI31061N	BRI51061N	BRI21061N
Pewter*	BRI91061J	BRI11061J	BRI31061J	BRI51061J	BRI21061J
Bristol Full Colour Chart [at cost price]			BRICC		£16.00

\*Please note, the Pewter comes as 5 kg [approx 4L], not 6 kg



### Rosco Off Broadway Metallic Paint

Water-based metallic paints which are economically priced. SPECIFICATION: Covers 8 - 9 m<sup>2</sup> per litre.



Colour	473ml	946ml	3.79L
Bright Gold	ROS25383	ROS15383	ROS35383
Gold	ROS25384	ROS15384	ROS35384
Silver	ROS25385	ROS15385	ROS35385
Copper	ROS25386	ROS15386	ROS35386
Antique Gold	ROS25387	ROS15387	ROS35387

